

# MONTHLY MEMBERSHIP PROGRESS REPORT

District 11 A2

Results as of: 3/31/2026

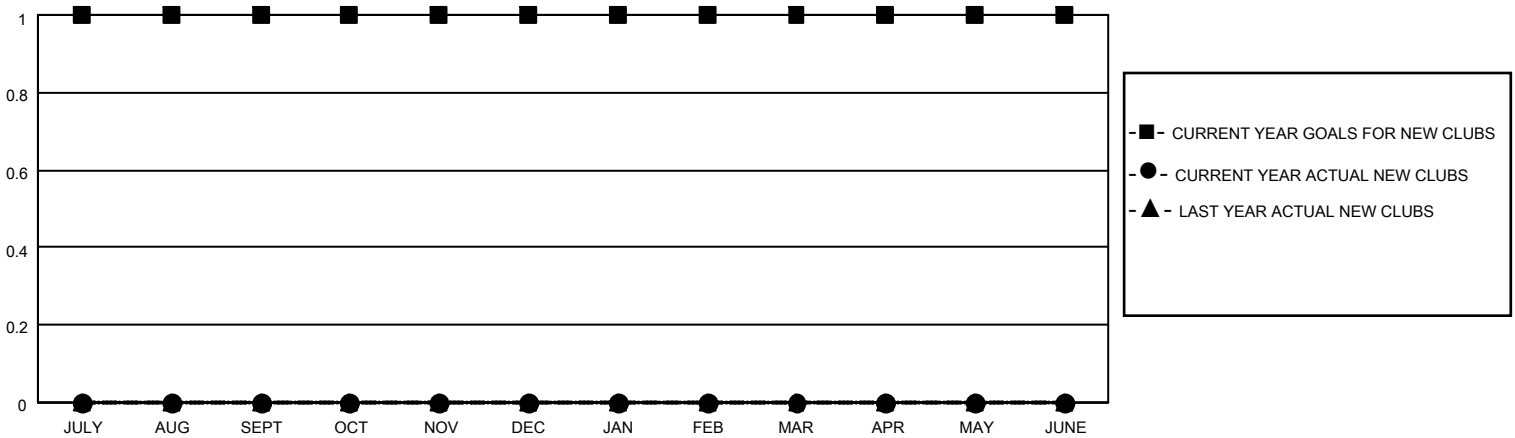
GMT:

LOCATION MICHIGAN

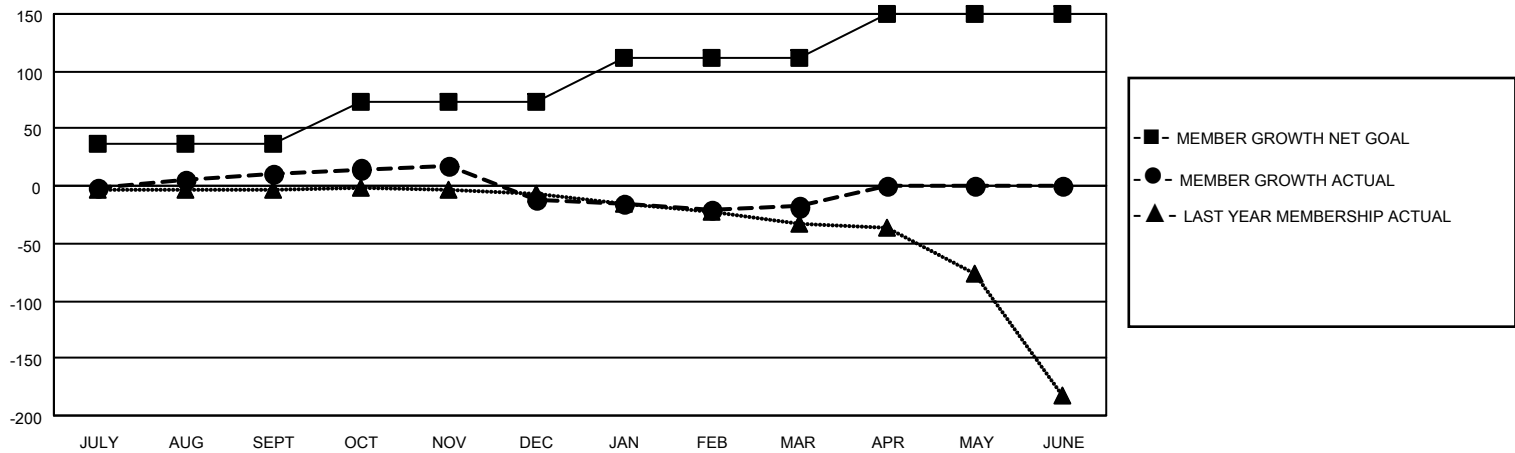
GMT CA

Clubs				Members			
RESULTS FOR 2025-2026				RESULTS FOR 2025-2026			
QUARTER	NEW CLUB GOAL	NEW CLUBS	DROPPED CLUBS	QUARTER	MEMBER GROWTH NET GOAL	MEMBER GROWTH ACTUAL	DROPPED MEMBERS ACTUAL (including transfers)
JULY/AUG/SEPT	1	0	0	JULY/AUG/SEPT	37	38	15
OCT/NOV/DEC	0	0	0	OCT/NOV/DEC	37	30	48
JAN/FEB/MAR	0	0	0	JAN/FEB/MAR	38	26	28
APR/MAY/JUNE	0	0	0	APR/MAY/JUNE	38	0	0

GOALS AND ACTUAL NEW CLUBS CUMULATIVE



GOALS AND ACTUAL MEMBERS CUMULATIVE



DROPPED CLUBS: 0	18 CLUBS OF 28 ADDED 1 OR MORE NEW MEMBERS	<b>GENDER DISTRIBUTION</b> MALE 656 (59.96%) FEMALE 438 (40.04%)
<b>DROPPED MEMBERS</b> DECEASED 14 CLUB CANCELLED 0 OTHER 77 TOTAL 91	<a href="#">CLICK HERE FOR CUMULATIVE MEMBERSHIP DATA</a>	TOTAL FAMILY UNIT MEMBERS 200 FAMILY MEMBERS PAYING HALF DUES 102